



Release Notes & Updates



New Features and Updates for the (22.18) Release

Please check page 4 for a list of ALL our new features and updates.
Here are a few updates that we want to highlight. :-)

Highly Requested Feature Added to Live Events – Check it out!!!

Prior to this release, on a Live Event agenda item, if you selected the option, “Display on agenda tab on catalog” it was tied to it also showing up as a button called View Agenda on a user’s account page.

However, sometimes you want your entire agenda to show up on the catalog but want only specific agenda items to show on a user’s account page. Well now you can! We have now separated those out so you can decide where you want your agenda items to display!

Go to a Live Event product, click on the Agenda Tab, and either create a new agenda item or edit an existing one and scroll down to the bottom where you can make the selections. Now voila, two options.

+

Details

Required

Admin Only

Display on Agenda tab in Product Details page


Display on View Agenda button in user's account

Display on registration popup

Display on Customer Attendance Confirmation

BACK-END VIEW

Save Changes



FRONT-END VIEW

IN-PERSON SEMINAR

40th Annual Current Concepts in Critical Care

Credit Available - See Contact Hours tab below.

Average Rating: Not yet rated

Category: [In-Person Seminars](#) | [Certification Exam Reviews](#) | [Certifications](#)

Speaker: Alex Klacman, PhD, RN, CV-BC, CCRN

Course Levels: Intermediate to Advanced

Duration: 1-Day Event

License: Not Applicable

Location: Albuquerque, New Mexico

Available Dates: Fri, Jun 03, 2022 - 08:00am to 04:00pm MDT - Albuquerque, New Mexico

Overview
Agenda
Speaker
How to Register
Hosting Hospital
Questions?
Contact Hours
Course Materials
Location Map

Day 1

Date/Time: Fri, Jun 03, 2022 - 08:00A to 04:45P (MDT) (10:00A - 06:45P EDT)

Location: Sandia Resort & Casino | Ballroom D 30 Rainbow Rd NE Albuquerque, NM 87113

Contact Hours: 7.25

Topics Covered

+ Details

Required

Admin Only

Display on Agenda tab in Product Details page


Display on View Agenda button in user's account 2

Display on registration popup

Display on Customer Attendance Confirmation

BACK-END VIEW

Save Changes



Lisa Wise
CE21 - TEst
1111111
lwise@ce21.com
5501 Airport Boulevard, Austin, Texas, 78751

FRONT-END VIEW

Contact Us

- [Customer Care: 800-763-3332](#)
- [Technical Support: 877-602-9877](#)
- [Customer Care: customercare@mededseminars.net](mailto:customercare@mededseminars.net)
- [Technical Support: support@mededseminars.net](mailto:support@mededseminars.net)

Edit Profile
Change Email
Change Password
Edit Addresses
Notification Options
Sign Out

[Get the CE21 Mobile™ App](#)

My Courses & Products 2
Transactions 3
Email Preferences
Saved 2
Contact Hour Tracker
Communications
Support Tickets 1

Search
Clear Search

Show All Products
▼
Show All Evaluation & Certificate
▼

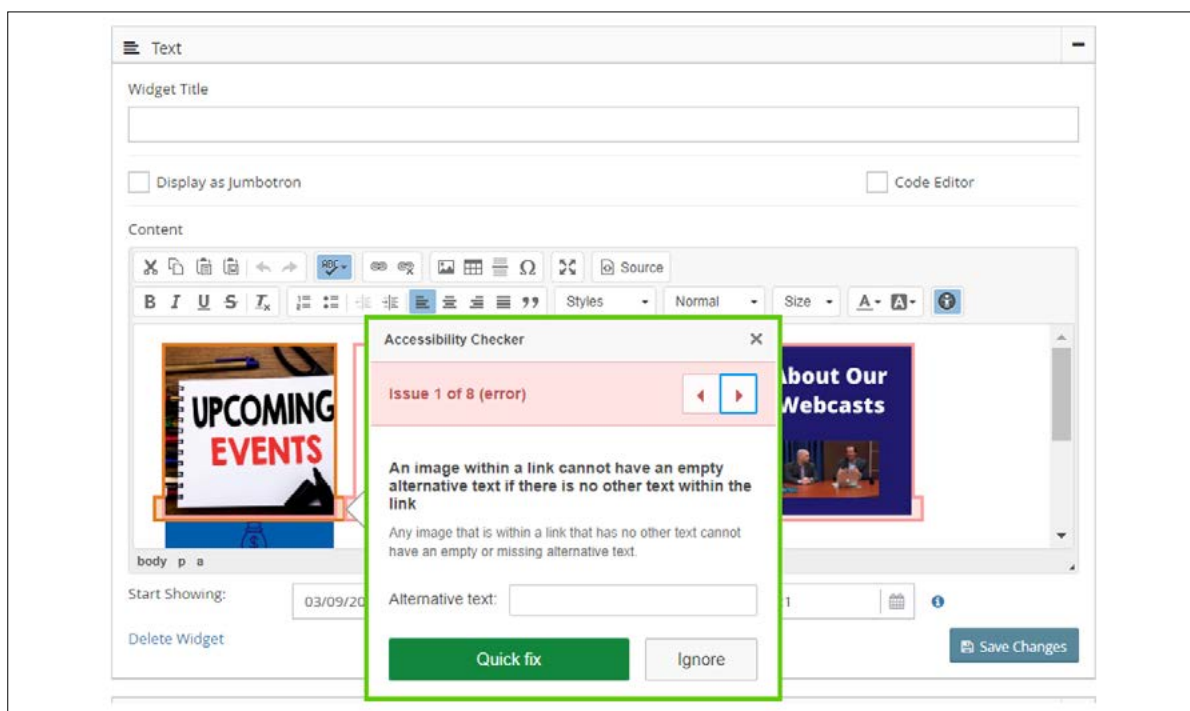
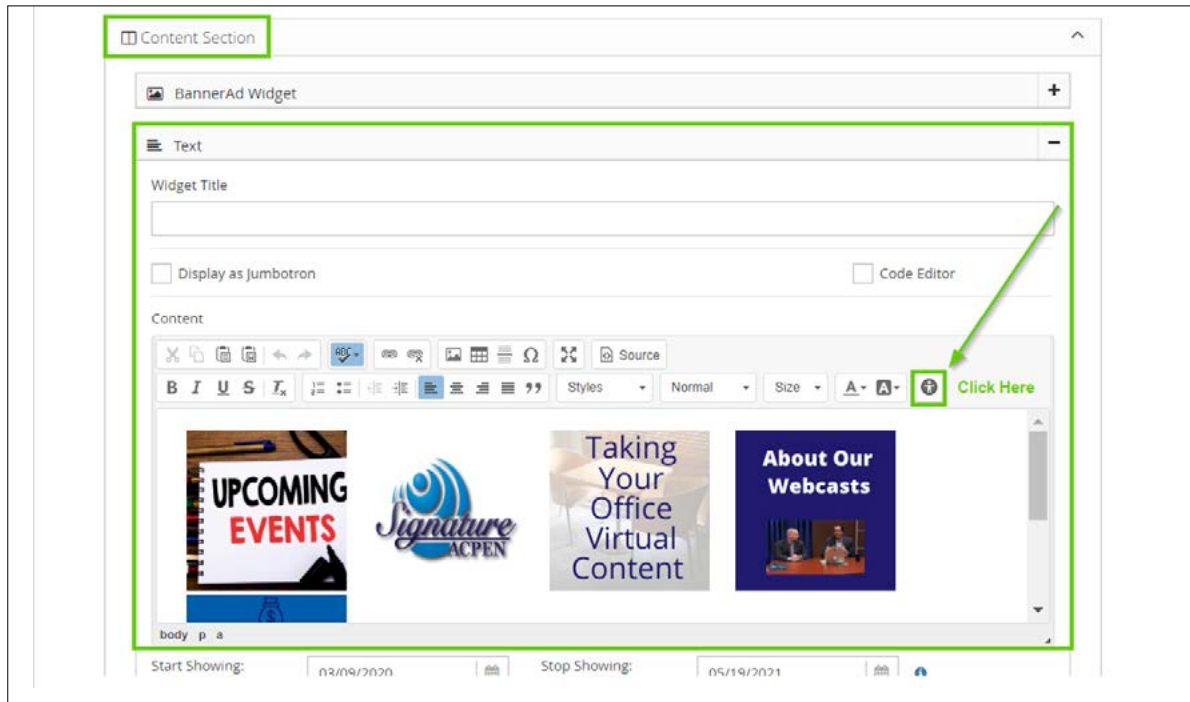
Purchase Date	Title	Event Date	Contact Hours	Evaluation & Certificate Status	Expiration
Sep 09, 2022	40th Annual Current Concepts in Critical Care (In-Person Seminar) <div style="margin-top: 5px; font-size: 0.7em;"> Course Materials View Agenda Evaluation & Certificate </div>	Jun 03, 2022 8am-4pm MDT	Click here for Contact Hours Information	Incomplete	

Please Note: Please allow up to 48 hours after the seminar end date to allow MED-ED to verify and confirm attendance before attempting to complete the evaluation and download your CE certificate.

All of our WYSIWYG HTML Editors in Manager now have an accessibility checker!

We now have a very cool feature that will check all images, videos etc. for alt text. Again this is an absolute must for screen readers and now you can just click this button and it will check for you to make sure all your images are accessible to everyone. Just as a reminder, a wysiwyg editor is any area of Manager where you can enter text, images, videos and where you have full control over font styling, positioning, colors and you can even add source html code.

In this example, I am in the editor of the text widget in Appearance > Layout. Here you will see the accessibility icon and when you click on it, it will scan through and tell you what needs to be identified.





Release Notes & Updates



New Features and Updates for the (22.18) Release

If you have any questions about the items listed in this release, please visit [The Exchange](#) and leave a comment.

FULL SYSTEM

ACCESSIBILITY

- We now have an accessibility checker in our CK Editor.

CATALOG APPEARANCE

- Fixed an issue in the shopping cart where deleting an item would move the side bar widget down on the page.
- Updated the My Account page on the catalog to have a little less white space for a cleaner look.

SALES

- Added Failed ACH transactions to the Ecommerce Errors page > Failed Recurring Payments tab.

LMS (Trident)

CATALOG APPEARANCE

- Fixed sorting by average customer review in catalog.

ORDERS

- When a product is deactivated, we will now add a note to the order history automatically.

PRODUCTS

- Complex Live Events with Agenda: New setting to allow you to choose either to display on the Agenda tab in the product details/sales page and/or to show in the "View Agenda" button within the user's account. Before that was one setting, and we have split those into two settings now.
- To assist your users, there is now a way for you to bypass/mark completion for our Zoom polling feature now.

AMS (Lighthouse)

GROUPS

- Added field selection to Import Company Based Employees.
- Added the Reactivate button to company based memberships that had been cancelled or ended so staff can quickly restart the company's membership when they come back.